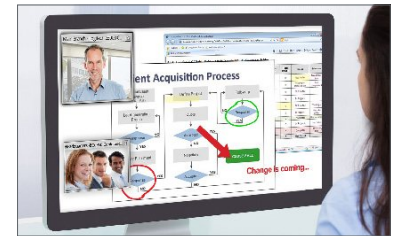




65" OneScreen™ h3

All-in-one collaboration hubware for meeting rooms and classrooms



OneScreen hubware delivers all of your familiar video, audio and web conferencing, whiteboarding, presenting, annotating, and sharing tools, at the touch of your finger, for barrier-free work flow.

One simple device. Unlimited options.

- Instant, centralized access to all of your preferred work tools for any type of meeting
- Supports all H.323/SIP video services and any standard web conferencing applications
- Ships with built-in OneScreen video conferencing services
- Simple interoperability with laptop, tablet, and smart phone
- Work tools for every level user, from basic whiteboard to video collaboration

Easy to use, in any use case.

- Start a video call, web conference, or whiteboard session from a simple, central launch screen
- Customize OneScreen with tool choices your teams will use
- Share workspace and see video, exchange and annotate content, in real time
- One touch access to networked and online content
- Set personalized user settings, triggered by login
- Live, on-demand help from Screen Skills Guru

Affordable quality in a scalable design.

- Business class video and audio quality
- Unlimited video conferencing use plans with OneScreen
- Costs less than 20% of equivalent quality installed solutions
- Open architecture easily adds the next must-have application
- Platform agnostic to open up options, no forced application use
- Available OneScreen Software deploys OneScreen to desktops and laptops

IT friendly.

- Open architecture provides ease of compatibility
- Plug-and-play as a stand-alone solution or integrated into installed system
- Screen Skills Guru minimizes help desk calls
- Adjusts to bandwidth requirements
- Resides on the network like any other PC
- Load any Windows-based application or proprietary program

In special partnership with
HITACHI

Available as Software and Hubware
www.claryicon.com
(800) 992-5279

OneScreen™
by Clary Icon

65" OneScreen™ h3 Specifications

DISPLAY/ TOUCH SCREEN	
Screen size (diagonal)	65"
Android TV	Android 4.2.2 Quad Core Processor / 3rd party App needed for Google Playstore access
Resolution	1920 x 1080
Input/Output	1x USB3.0, 2x USB2.0, 1xRF in, 1x Power on/off button, 1x Reset button, 3x HDMI, 1x RS-232, 1x Headphone port, 1x AV out, 1x YPBPR, 1x VGA, 1x SD card reader, 1x USB touch port, 1x RJ45, 1x AV2 in, 1x CVBS, 1x Optical port
Connectivity	Ethernet, Built-in Wireless (802.11 a/b/g/n)
Aspect Ratio	16:09
Dynamic Contrast Ratio	5000 : 1
Touch Technology	Infrared with no pressure required
Touch Points	10 points
Refresh Rate	60 Hz
Protective Skin Glass	Yes
Viewing Angle	178 degrees
Interface Switch	Touch Gesture to Switch Interface
Writing Style	Finger or Any Solid Object
Support OS	Windows 10, 8.1, 7//XP,Vista,Linux/Mac OS X/Android
Scanning Speed	<17 ms
Tolerance	±1.5 mm

CAMERA	
Camera	OneScreen PTZ camera VHD-V61U with CHAT 150 speakerphone
Lens	12x, f3.5mm ~ 42.3mm, F1.8 ~ F2.8
Viewing Angle	72.5 degree horizontal, 44.8 degree vertical
Motorized Movement	Smooth motorized pan, tilt, zoom controlled from remote with 170-degree pan, -30 ~+90-degree tilt and 12x zoom
On-Board Encoding	H.265 support for full HD in ultra-low bandwidth, UVC supported
Refresh Rate	60 Frames Per Second
Resolution	Full HD 1080p
On-board Controls	Far-end control, on-board RS232 in/out, RS-485 port, HDMI out, Ethernet port

SYSTEM	
Product Weight	148 lbs
Product Dims (WxHxD)	60.9" x 36.8" x 3.6" (does not include camera mounted on top)
Shipping Dims & Weight Ships in wooden container	68" x 47" x 10" / 231 lbs
Power Supply	AC 100-240V, 50/60 Hz
Remote Control Included	1x Monitor Remote Control, 1x Camera Remote Control
Keyboard Included	Logitech k400 full size wireless touch keyboard with 33 ft (10 m) wireless range
Warranty	Includes one year Standard Warranty. Advanced Hardware Warranty optional

ONESCREEN v2 SOFTWARE SUBSCRIPTION	
Annual Subscription	(1) Host subscription includes up to (25) Corollary Accounts, unlimited multi-party calls with up to (99) participants on WebRTC/OneScreen and up to (8) ad hoc and SIP/H323 participants, whiteboard and annotation software 9.62, UI integration with Skype for Business, Adobe Connect, and Cisco WebEx, access to Skype, OneScreen Software upgrades, Screen Skills Guru, NAT Firewall Transversal
Customizable Home Screen	Simple central launch screen provides unified access point for preferred collaboration tools
Software and Bridging Service	OneScreen's comprehensive video and audio conferencing and collaboration services
Select Features	Presence, Instant Video Calling, Instant Messaging, Instant Recording, Meeting Scheduler, Contact Status Indicator, Contact Communities, Individual Audio Control and Muting, Instant and Synchronous Screen, Content, and App Sharing, Call Answer Pre Set
Multi Camera Support	Up to 4 cameras simultaneously
Data Sharing	Each user can share application or desktop into a single meeting simultaneously. Supports H.329 data share for legacy H.323 systems with that capability
Network Ports	OneScreen Software client connects through port 46000, WebRTC connects through additional ports including 443, 80. Additional ports information document available
Protocols Used	Proprietary signaling and supports SIP, H.323, H.329, LDAP/AD, G.711, VP8, H.264, H.261, SSL, ICE/STUN/TURN, WebRTC, Speex Audio CODEC, VISCA, HTTP/HTTPS, RTSP
Video	Multiple independent video windows, multiple monitor support, multiple video sources from a single endpoint, Not hardware end point dependent, converts incoming feed to protocol of end point, both video and content converted
Video Resolution	Support for any resolution that is supplied by the source including but not limited to: HD, VGA, Half-VGA, CIF, QCIF, any desktop resolution, applications resolution
Audio Experience	Automatic Noise Suppression (AES) Echo Cancellation, Speex 8K and 16K codec, narrow and wideband, Full Duplex Audio, Push to Talk, automatic meeting recovery, Independent volume control for each site including mute
Security	Full admin control to allow or limit user capabilities based on user, meeting, or event. All meetings encrypted by default with no option for send user to override. All meetings randomly generated as well as all key codes for encryption per meeting. All login, configuration management use HTTPS

COMPUTER	
Operating System	Windows 8.1 Professional (Compatible with 7, 8.1, and 10)
Processor	Intel Core i7
Memory	8 GB DDR3
Hard Drive	1T Optical and 128G SSD
Connectivity	Ethernet, 2x Built-in Wireless (802.11 a/b/g/n)
Input/Output	1x VGA, 1x HDMI, 1x LAN(10/100/1000Mbps), 1x WIFI(3.4Ghz), 1x Audio(MIC\line_in\out\line_out), 2x USB2.0, 2x USB3.0, 1x PWR, 1x DC, 1x 80PIN OPS port

AUDIO	
Speakers	Balance, automatic volume control, surround sound, fiber optic
Speaker System	2pcs Built-in, Left/Right
Audio Output	10W + 10W
Speaker Phone	Enterprise grade omni-directional full duplex mics, acoustic echo cancel, wideband audio

Specifications are subject to change at any time without notice. © 2016. All rights reserved. April 2016